



French Livestock Farm Networks

**A system at the centre of
French farming development**

Carole JOUSSEINS

Jocelyn FAGON

Institut de l'Elevage



Plan of the presentation

History and territorial organisation of agricultural development in France

The Livestock farm network organisation

The Livestock farm network mobilised on emerging themes



History and territorial organisation of agricultural development (1/3)

- **1950s – 1960s: Strong collective dimension of the organisation of development and advice, situated between orientation given by public policies and proximity relationships based on local expectations**
- **1966 : Co-management between the State and farming profession**



History and territorial organisation of agricultural development (2/3)

- This organisation is applied over the whole territory thanks to a local network reproduced on each administrative area
 - **Departemental Chambers of Agriculture**
 - **Cooperation and economic organisations**
 - **Technical Institutes by sectors, type of productions**
 - **Public research organisation (INRA, CIRAD...)**



History and territorial organisation of agricultural development (3/3)

- Advice evolved to become less prescriptive and more collaborative, more multi disciplinary
- Common actions increase but personalised individual advice is still present



Plan of the presentation

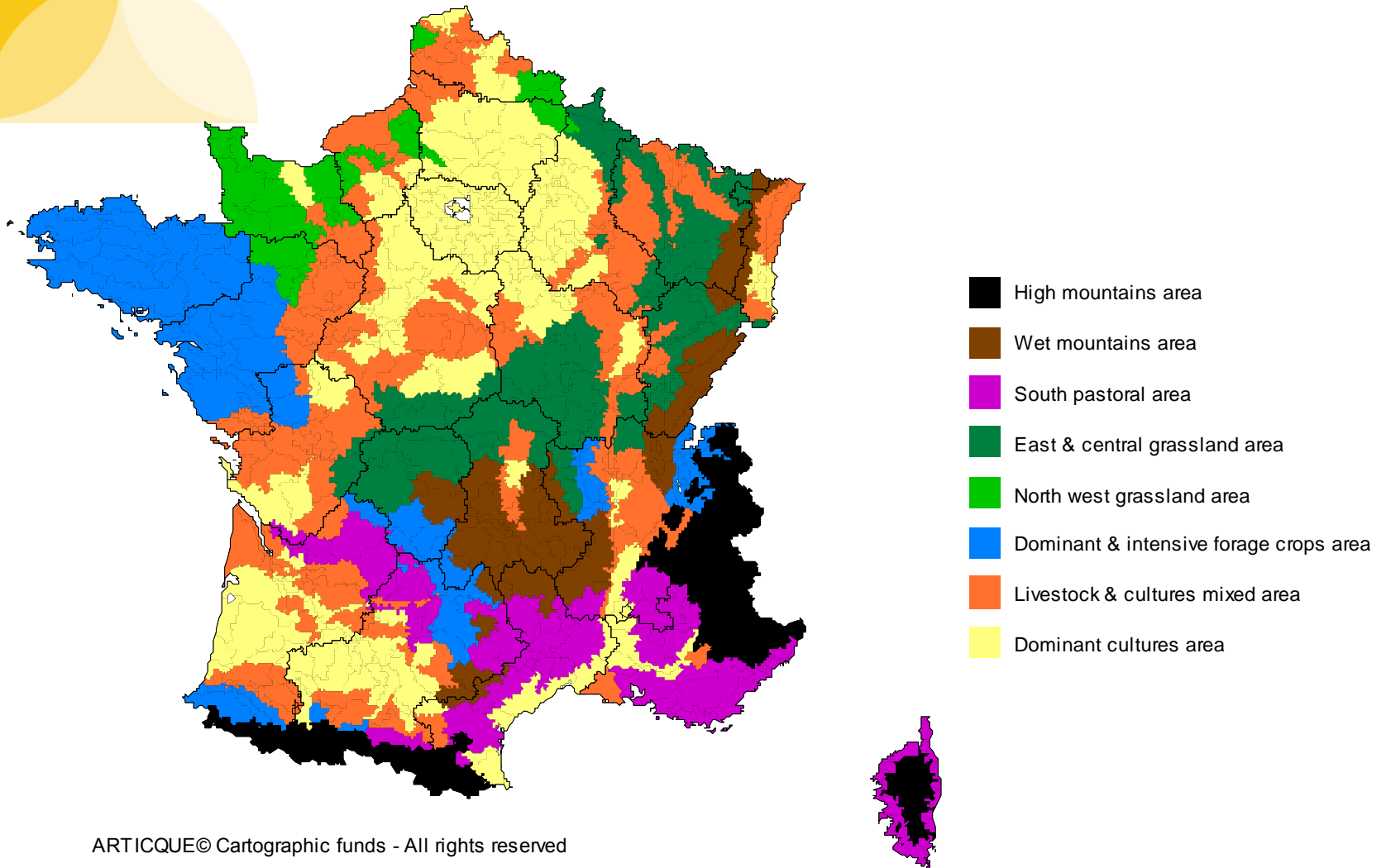
History and territorial organisation of agricultural development in France

The Livestock farm network organisation

The Livestock farm network mobilised on emerging themes



Location of herbivore farming areas



ARTICQUE© Cartographic funds - All rights reserved

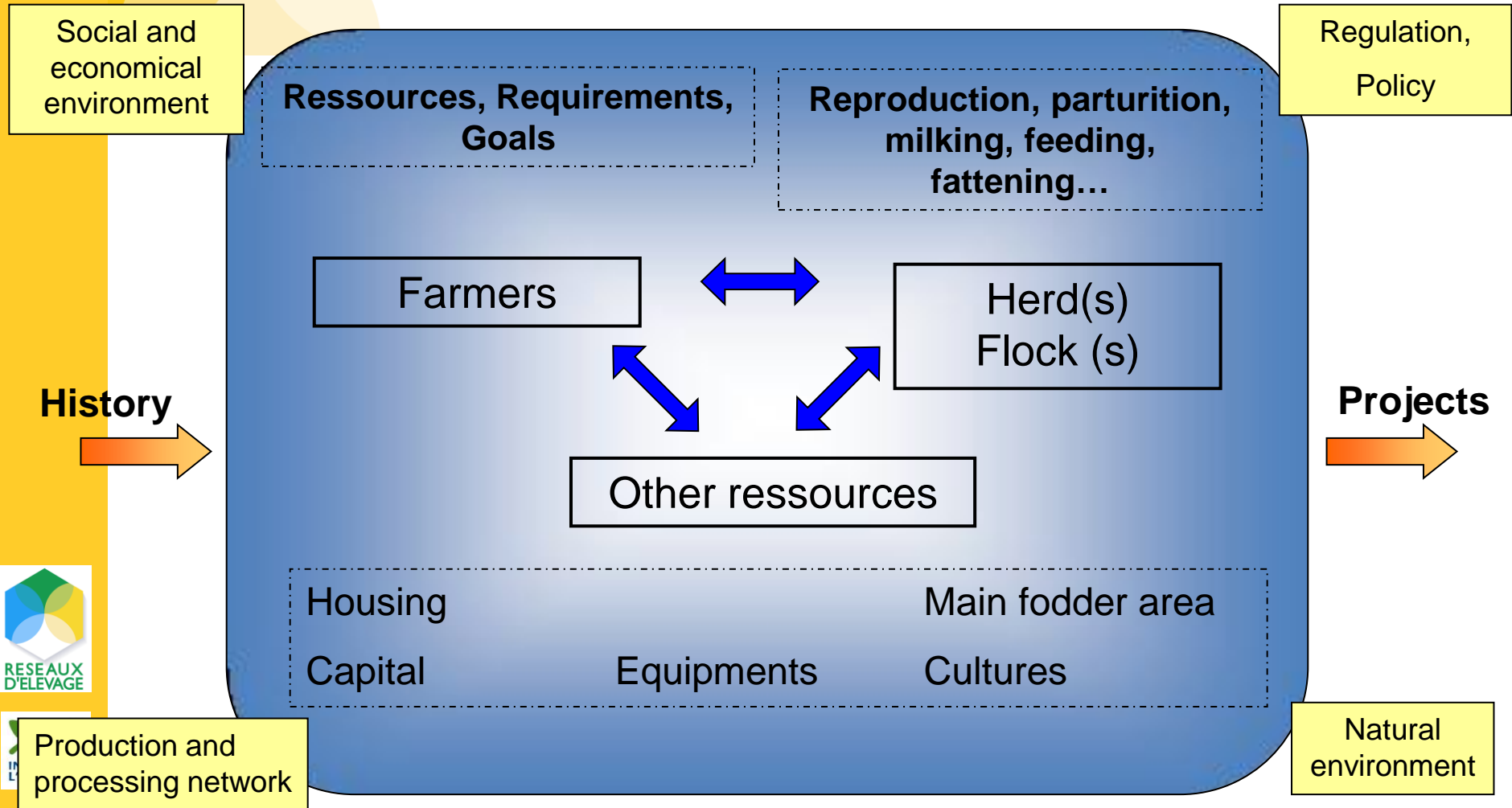
Data sources: Institut de l'Élevage

To catch the geographical, soil, climate diversity.

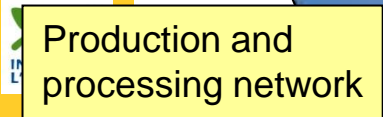
Liflod workshop -



Representation of a livestock farming system and its components

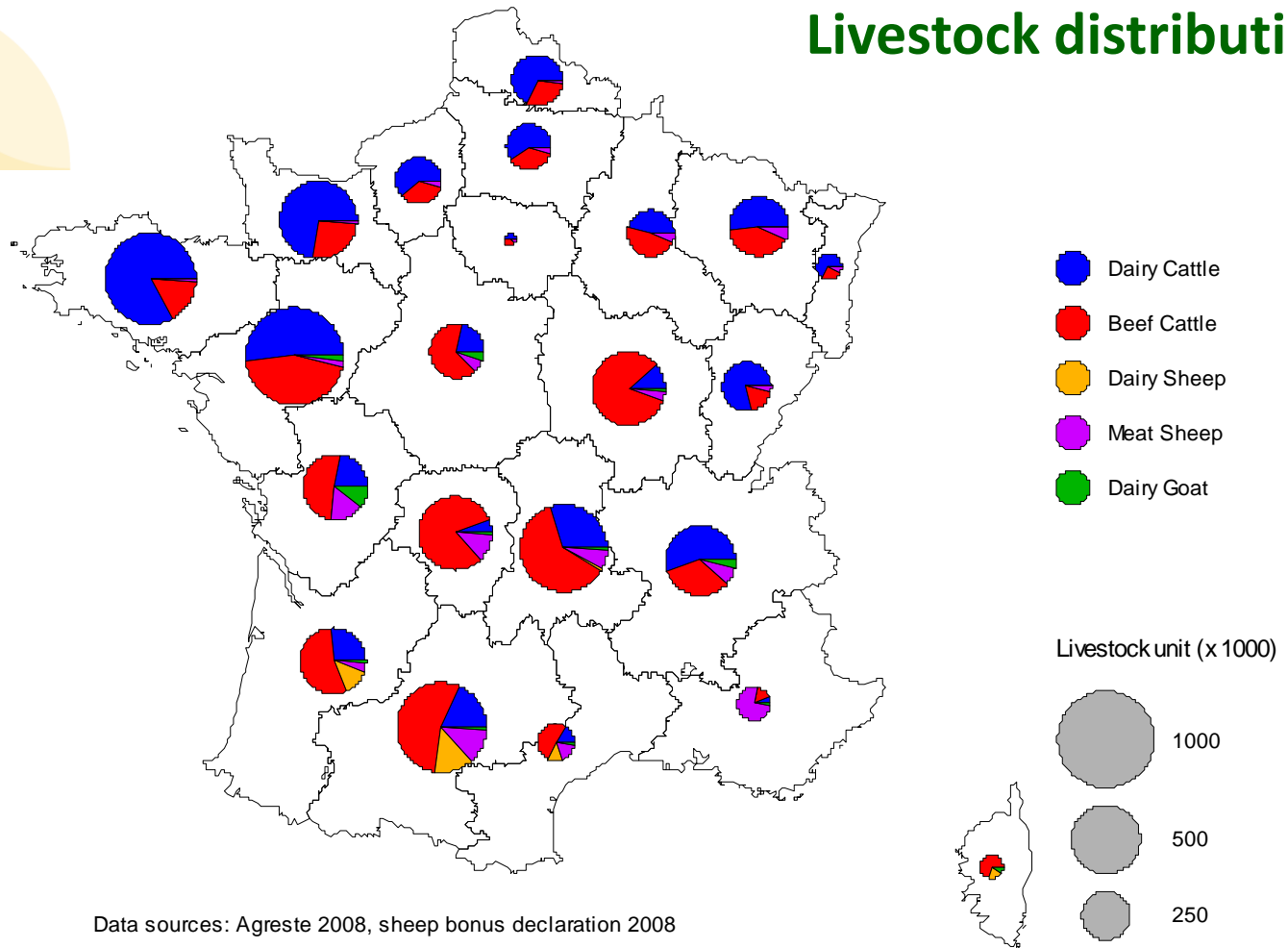


Global and territorial approach.



The Livestock farm network organisation

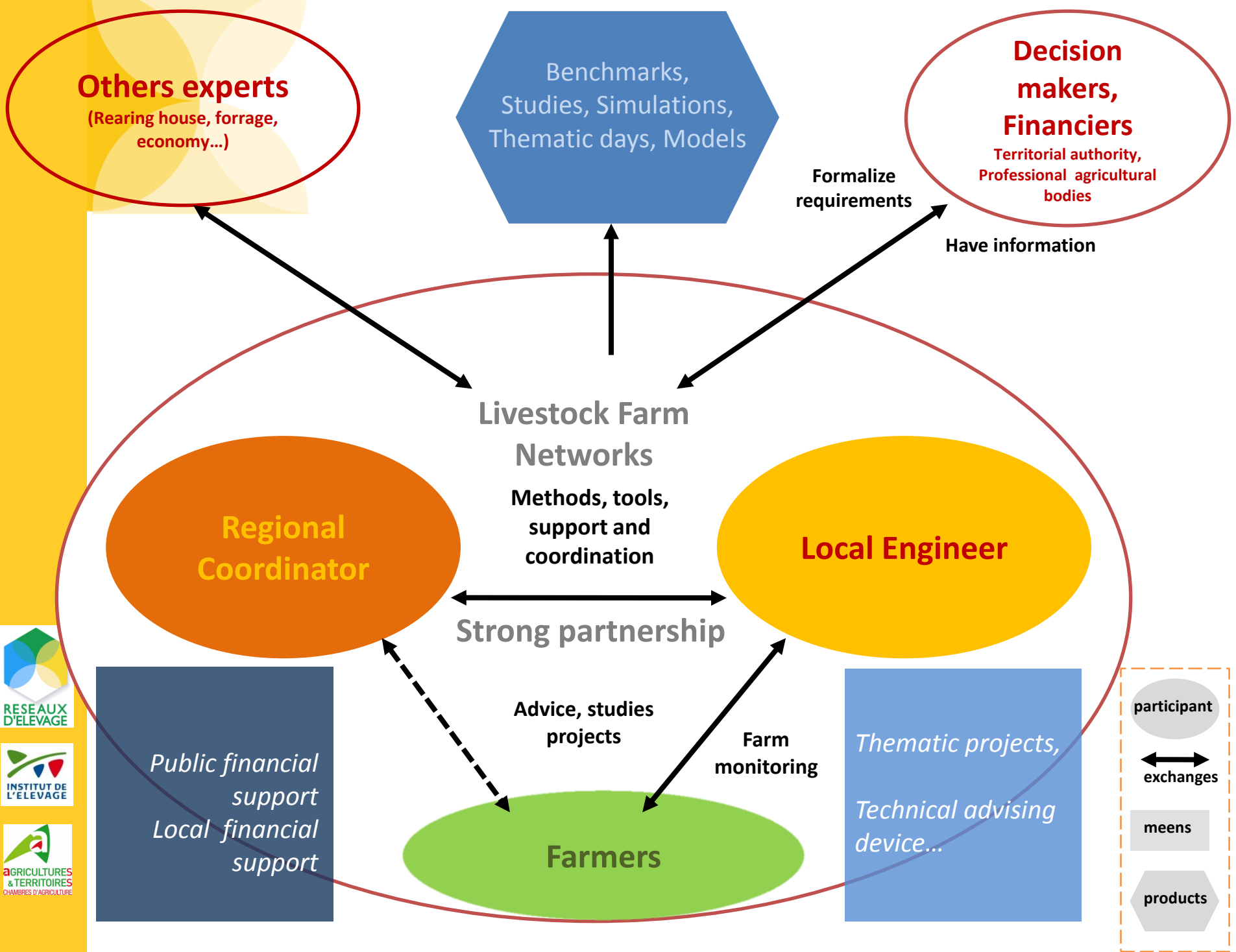
Livestock distribution



Data sources: Agreste 2008, sheep bonus declaration 2008

ARTICQUE© Cartographic funds - All rights reserved

Faced to the mosaic of the breeding areas and livestock distribution, 1420 selected farms illustrate diversity but are not an exhaustive representation of all systems.



Plan of the presentation

History and territorial organisation of agricultural development in France

The Livestock farm network organisation

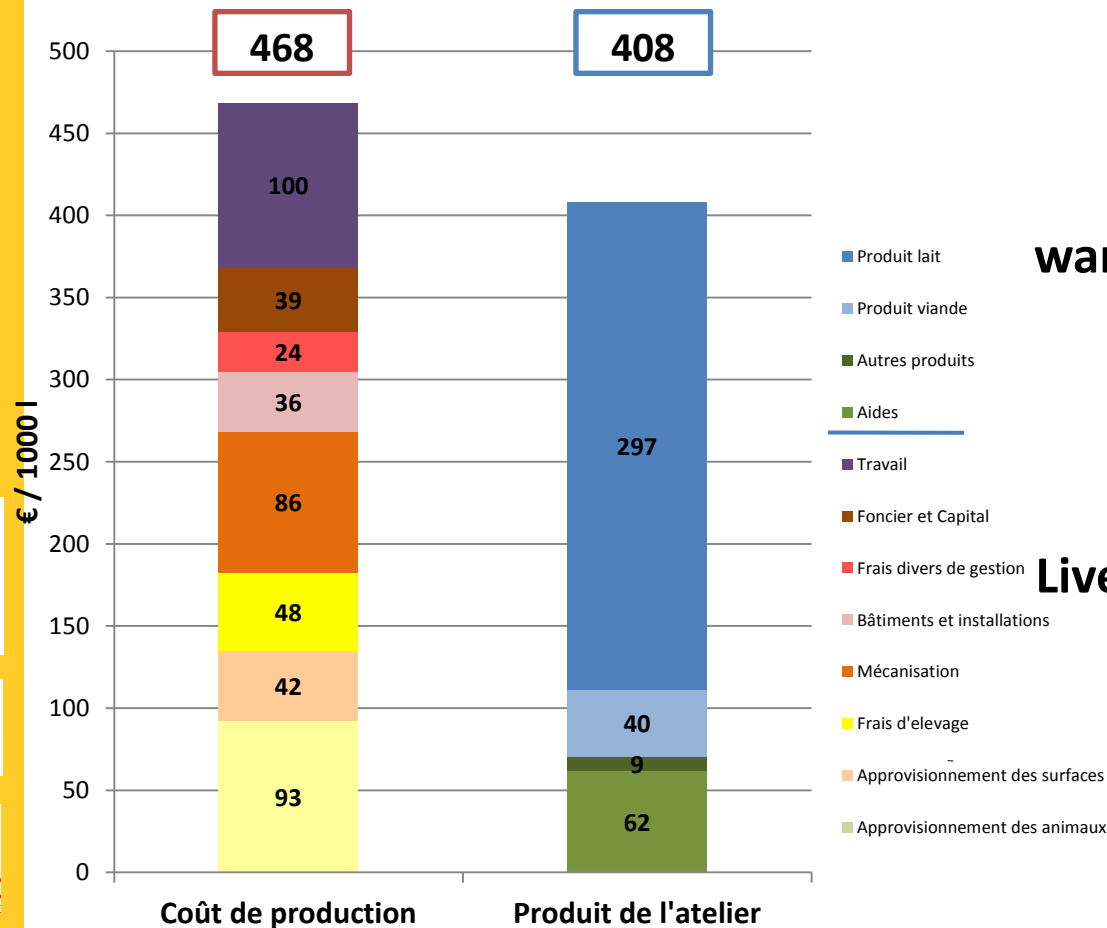
The Livestock farm network mobilised on emerging themes (sustainable development)



The Livestock farm network mobilised on emerging themes (1/3)

Measuring and strengthening the competitiveness of the farms

Individual or Group results



Volatility of the economical context



Farming professionals want quickly concrete answers to drive their systems

Strong reactivity of the Livestock Network to produce : Methods, Tools, Benchmarks

For each farms, even outside the Network

Liflod workshop -



The Livestock farm network mobilised on emerging themes (2/3)

Preserving the environment and limiting the ecological footprint

- **Environmental impacts of farming are discussed**
 - Evaluation of excess nitrogen, phosphorus, potash
 - Energy consumption
 - Greenhouse gas emission
- **Grenelle environment forum**
 - DIATERRE partnership method and tool
 - 100, 000 farms diagnoses



The Livestock farm network mobilised on emerging themes (3/3)

Preserving the environment and limiting the ecological footprint

- **Global benchmarks to evaluate energy consumption at farm level**
 - Per system of production
 - MJ / unit of production (1000 L of milk, 100 kg of live meat or carcass)
- **For the farmers**
 - **Concrete reference to identify margins of progress in his system, in his area**
 - L of fioul / ha
 - % of bought concentrated feed...



Discussion - A recognised system which must continue to adapt

- **Catch the diversity of the french livestock**
 - Variety of production is a source of flexibility
 - Representative enough of existing systems
- **A reactive network**
 - Identify the new themes, initiated by the farmers themselves or their environment
 - But identify all of them is very difficult but experimenting new approaches on well known farms is easier
 - Working on the transmission



Discussion - A recognised system which must continue to adapt

- **Recognised and supported by farming professionals and public authorities**
 - Several farming sectors want to extend the network to their own production
 - Even if it's seems expensive
- **Complex to manage but rich**
 - Strong partnership
 - Diversity and multi-disciplinarity of the partners
- **Supports for many partnership projects**
 - National and international





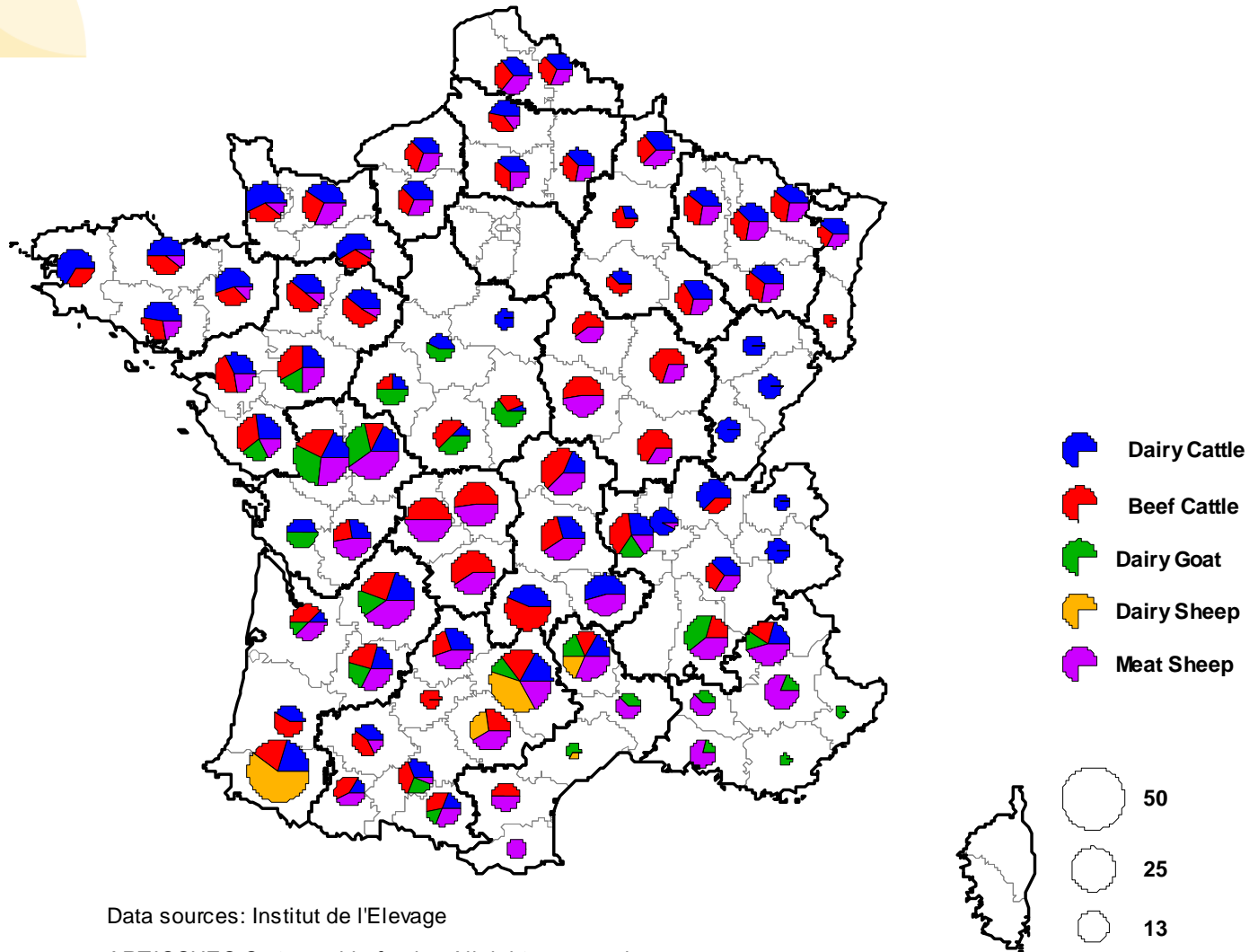
French Livestock Farm Networks

**Thank you to all the farmers,
our 210 agents in charge of monitoring,
our 33 colleagues who manage the system**



The Livestock farm network organisation

Livestock farm networks in 2010



Data sources: Institut de l'Elevage

ARTICQUE© Cartographic funds - All rights reserved

Liflod workshop -



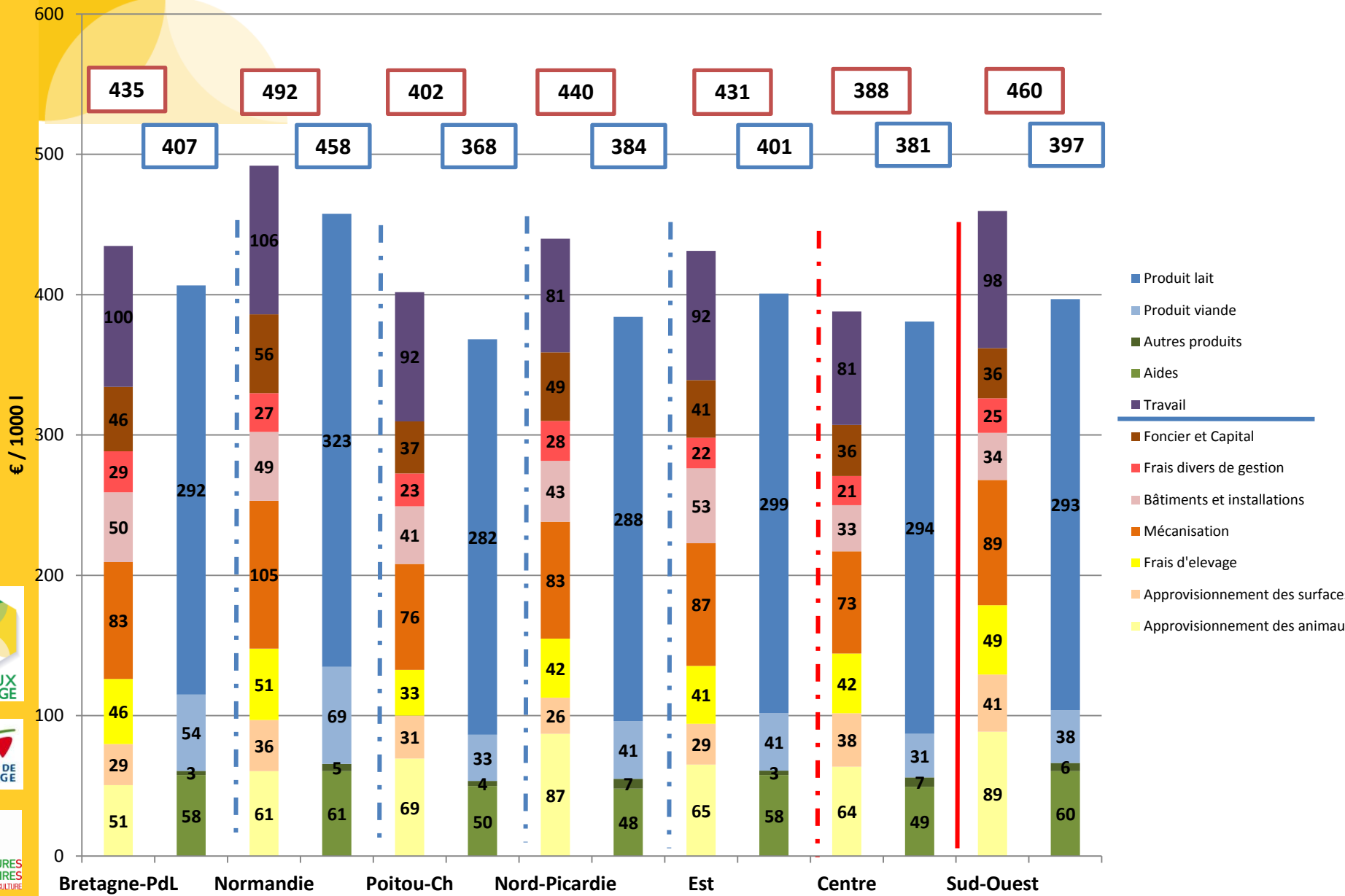
The Livestock farm network organisation

Livestock farm networks in 2010

Animal sectors	Number of farms monitored in the Networks	Including mixed systems	Number of French professional farms in 2007
Beef Cattle	450		100 200
Dairy Cattle	400	Beef and Dairy Cattle	90 100
Meat Sheep	380	Meat sheep - Beef Cattle ; Meat Sheep – Dairy Cattle	29 200
Dairy sheep	60	Dairy Sheep – Beef Cattle ; Dairy and Meat Sheep	4 800
Dairy goat	130	Goat and Beef Cattle ; Goat and Dairy Cattle	10 400
Total	1420		234 700

+ 500 livestock systems, locally financially support

Coûts de Prod. Réseau Nat. 2009 – Plaine



Analyses de profils de coûts de production

Réseaux d'élevage BL 2009 - Plaine

Unité = € / 1000 litres de lait commercialisé

Toutes zones 337 élevages	Ensemble Plaine 236 élevages	Plaine Sud-ouest 31 élevages	Plaine Sud-Aquitaine 12 élevages
Coût de production 473 €			
Achat aliments 69 €	- 2 €	+ 22 €	+ 15 €
Appro surfaces 30 €	+ 1 €	+ 11 €	+ 11 €
Frais d'élevage 47 €	- 2 €	+ 3 €	+ 8 €
Mécanisation 95 €	- 10 €	- 7 €	- 6 €
Bâtiments 47 €	- 3 €	- 12 €	- 14 €
Frais généraux 28 €	- 3 €	- 4 €	+ 2 €
Travail (dt salariés) 115 €	- 19 €	- 19 €	- 1 €
Foncier et capital 43 €	- 2 €	- 8 €	- 9 €
	435 € - 39 €	459 € - 14 €	480 € + 7 €
Produits Atelier 423 €			
Prix de vente 303 €	- 9 €	- 9 €	- 11 €
Produits joints 51 €	- 3 €	- 7 €	- 4 €
Aides couplées 10 €	+ 0 €	+ 5 €	+ 5 €
DPU 44 €	- 0 €	+ 1 €	+ 5 €
Aides 2 ^o pilier 15 €	- 13 €	- 14 €	- 13 €
	398 € - 25 €	398 € - 25 €	405 € - 18 €
Prix de revient 354 €	331 € - 23 €	356 € + 2 €	367 € + 14 €
SMIC / UMO BL expl 0.9	1.0 + 0.0	0.6 - 0.4	0,7 - 0,3
Volume total 446	493 + 48	593 + 147	408 - 38
Vol / UMO atelier 248	279 + 31	287 + 39	234 - 15
UMO atelier 1.8	1.8 - 0.0	2.1 + 0.3	1,7 - 0,0
dont salariés 0.2	0.2 + 0.0	0.2 + 0.0	0,1 - 0,1